



UNITED ENGINEERING CONSULTANTS, INC.

- Building Condition Surveys
- Contract Administration
- Corrosion Control Design
- Structural Inspection & Design
- Project Planning & Management

FIELD OVSERVATION REPORT PERMIT # BLDC-000287-2020

		Report No. 3	Page 1 of 1
Project:	Southpoint Condominium	Inspection For:	Restoration Project
Day/Date:	Tuesday, May 12, 2020	Job No.	19-1086
Location:	4453 S. Atlantic Ave, Ponce Inlet	Engineer:	Timothy J. Snook, P.E.
Contractor:	ACE Enterprises, LLC	Project Foreman:	Wes Swaim
Subcontractor:	GAR Waterblasting (4)	Inspector:	Timothy J. Snook, P.E.
Weather:	74 Degrees @ 8:55 A.M. Sunny	Light Breeze	0% Chance of Rain
Workforce Total:	10		
Activities:	Grind coatings, concrete demo		

Observation Report:

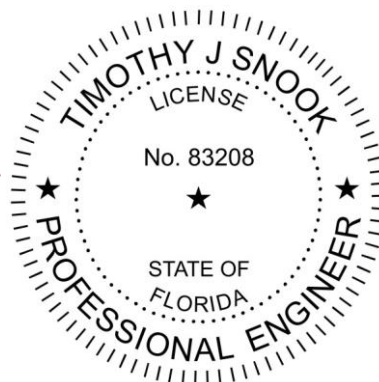
Concrete demolition is in-progress on the bottom side of the parking deck (See Photos 1-3). The Engineer was on-site to provide direction for supplementation of the beams running in the North/South direction. The #7 bars will need to have a minimum lap of 41.5". The stirrups will be replaced with new stirrups where section-loss is exhibited. Epoxy doweling the bars where required was discussed at the columns.

Protection for the sliding glass doors and guardrails on the 11 stack balconies is complete. Removal of the balcony deck coatings is in-progress.

Removal of the walkway deck coatings is in-progress (See Photos 4-5). The subcontractor is stripping the center portion of the decks where the machine will reach. The remainder of the coating will need to be removed by grinders. The 2nd floor has been completed and stripping is in-progress on the 7th floor.

UNITED ENGINEERING CONSULTANTS

Timothy J. Snook, P.E.
Florida License No. 83208



This item has been electronically signed and sealed by Timothy J. Snook using a Digital Signature and date. Printed Copies of this Document are not considered signed and sealed and the SHA authentication code must be verified on any electronic copies.



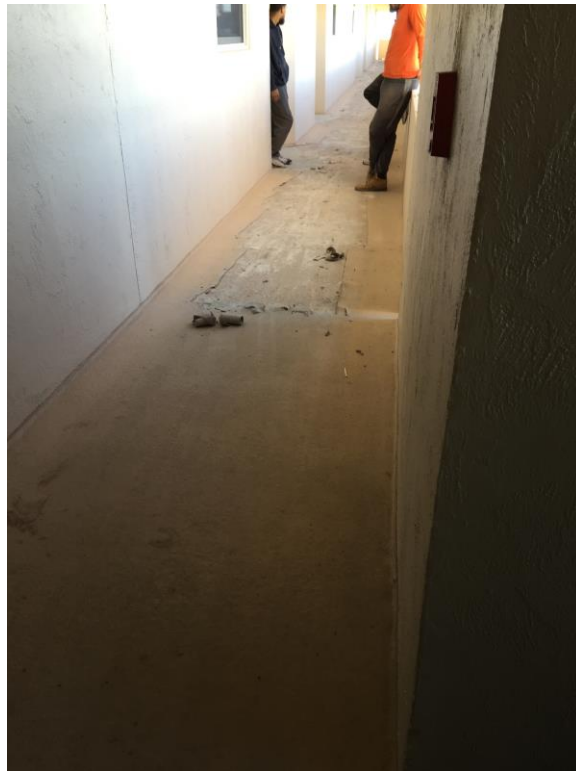
Picture 1: In-progress demolition of beam running in the North/South direction



Picture 2: In-progress demolition of beam running in the North/South direction



Picture 3: In-progress demolition of beam running in the East/West direction



Picture 4: In-progress stripping of walkway coatings



Picture 5: In-progress walkway stripping